

EASTERN POINT ROAD

Building 288
Groton, Connecticut

LAB/OFFICE/R&D FOR LEASE

15,995 SF AVAILABLE IMMEDIATELY





LAB/OFFICE/R&D FOR LEASE

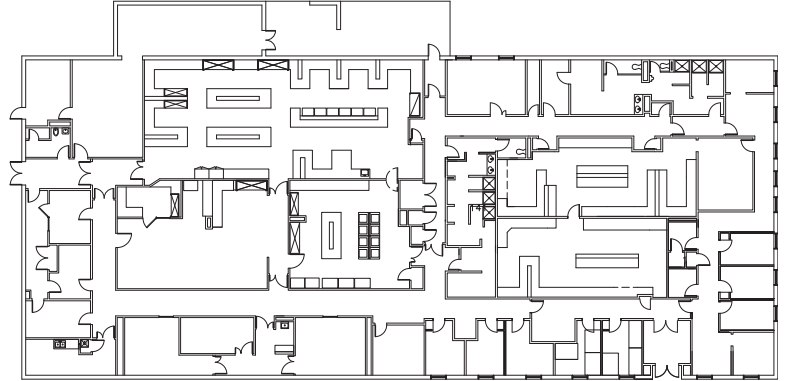
EASTERN POINT ROAD

Building 288
Groton, Connecticut

15,995 SF AVAILABLE IMMEDIATELY

Building 288, located on Eastern Point Road, is a 15,995-square foot lab/office/R&D building located in Groton, Connecticut. Formerly a Pfizer research facility, this efficient, flexible building offers existing laboratory space, ample parking and storage space.

The Pfizer Campus overlooks the Thames River and is just minutes from I-95 in south-eastern Connecticut. The building is a 50-minute drive to Hartford and Providence.



BUILDING SIZE	15,995 SF
LEASE RATE	\$11.00 NNN
ZONING	ROS
PARKING	4.0 / 1,000 SF
PROPERTY TYPE	Office/R&D/flex

SPACE AMENITIES

- 7,636 SF laboratory area
- Storage
- Furniture available
- Garage and surface parking
- Groton/New London airport and several marinas are just minutes away



FOR MORE INFORMATION, PLEASE CONTACT:

JON PUTNAM

Executive Director

(860) 249-0900

jonathan.putnam@cushwake.com

CUSHMAN & WAKEFIELD OF CONNECTICUT, INC

280 Trumbull Street, 22nd Floor

Hartford, CT 06103

(860) 249-0900

www.cushmanwakefield.com

The depiction in the included photograph of any person, entity, sign, logo or property, other than Cushman & Wakefield's (C&W) client and the property offered by C&W, is incidental only, and is not intended to connote any affiliation, connection, association, sponsorship or approval by or between that which is incidentally depicted and C&W or its client. This listing shall not be deemed an offer to lease, sublease or sell such property, and, in the event of any transaction for such property, no commission shall be earned by or payable to any cooperating broker except if otherwise provided pursuant to the express terms, rates and conditions of C&W's agreement with its principal, if, as and when such commission (if any) is actually received from such principal. (A copy of the rates and conditions referred to above with respect to this property is available upon request.)

